



TAILORED
SOLUTION
HYGIENE BEST PRACTICES

RAISE THE HYGIENE STANDARDS OF YOUR BUSINESS

Through this manual, Papernet has prepared a hygienic-professional journey aimed at guaranteeing highly personalized solutions able to ensure protection and safety in all work environments.



HO.RE.CA.

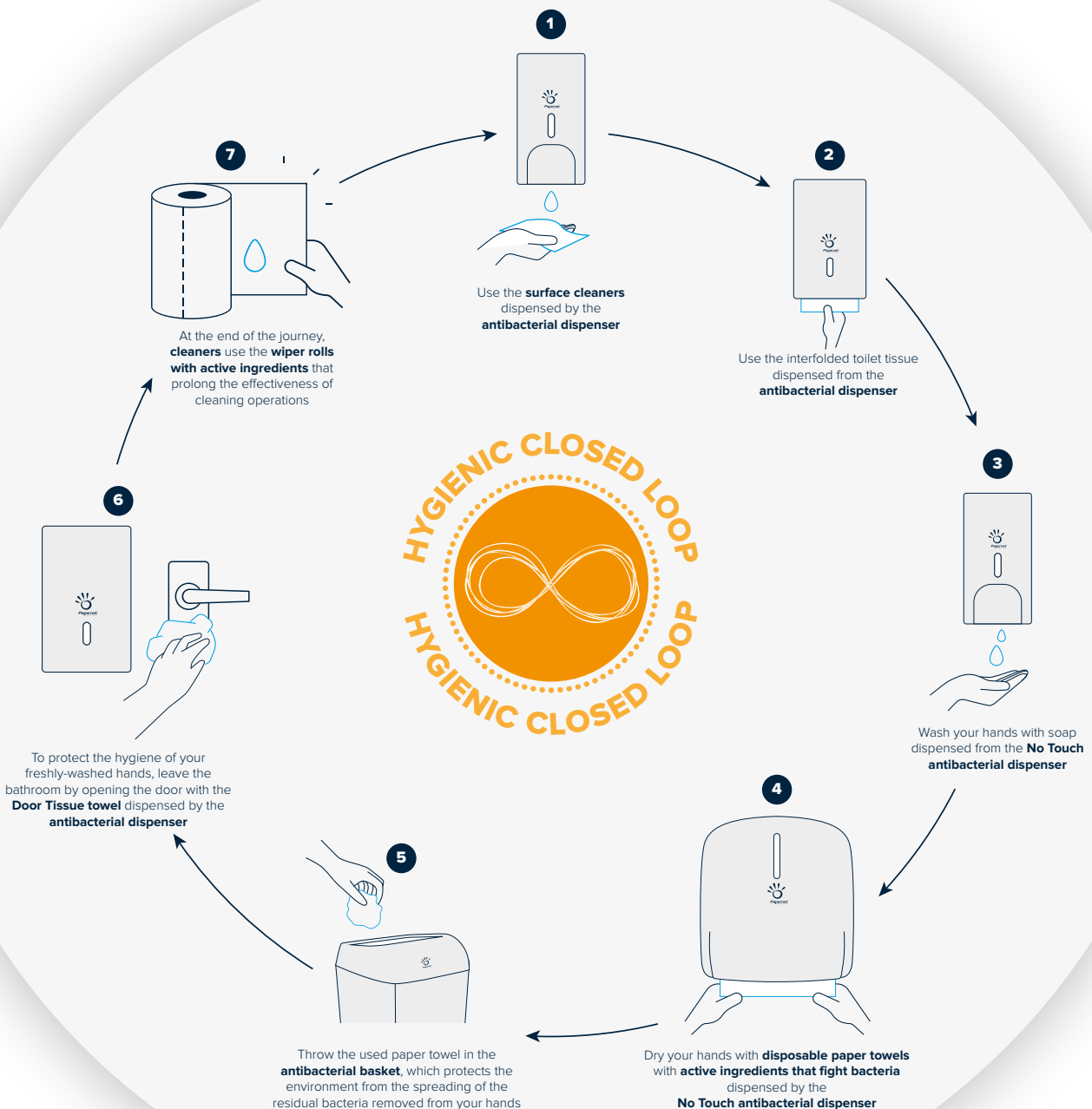
“

A real Customer Journey that will help professionals in the Hospitality Industry to guarantee the best quality standards in terms of hygiene and increase the value of services within their structures.



READY, AS ALWAYS, TO DO OUR PART.

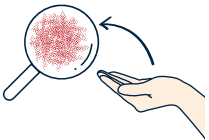
Papernet is sustainable hygiene. With this special tool, recommendations and solutions manual, Papernet provides a valid support to make every working environment even more hygienic and clean.



**HYGIENE,
A CENTRAL TOPIC
IN THE CREATION
OF SHARED VALUE**

Hygiene is a primary asset that helps protect our health and the overall quality of our lives. Let's defend it together with conscious behaviours and choices.

BE SMART HEALTHY BUSINESS



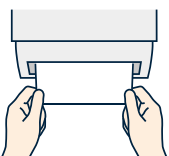
1

Hands are the main means of contact with the world and their proper hygiene is essential*. Providing guests and operators with the right products, in the most sensitive areas, is an effective way to ensure maximum safety at every stage.



2

As demonstrated and supported by numerous studies and authoritative sources***, paper towels are the best solution to reduce the proliferation of germs and bacteria on the hands and avoid their dispersion in the surrounding environment**.



3

Papernet Antibacterial Towel Dispensers ensure the highest level of hygiene in the hand drying process, helping to significantly reduce bacteria in the environment.



* The WHO claims that by just **washing our hands frequently with soap and water for about 30-40 seconds** can protect us from the thousands of germs and bacteria in the environment.

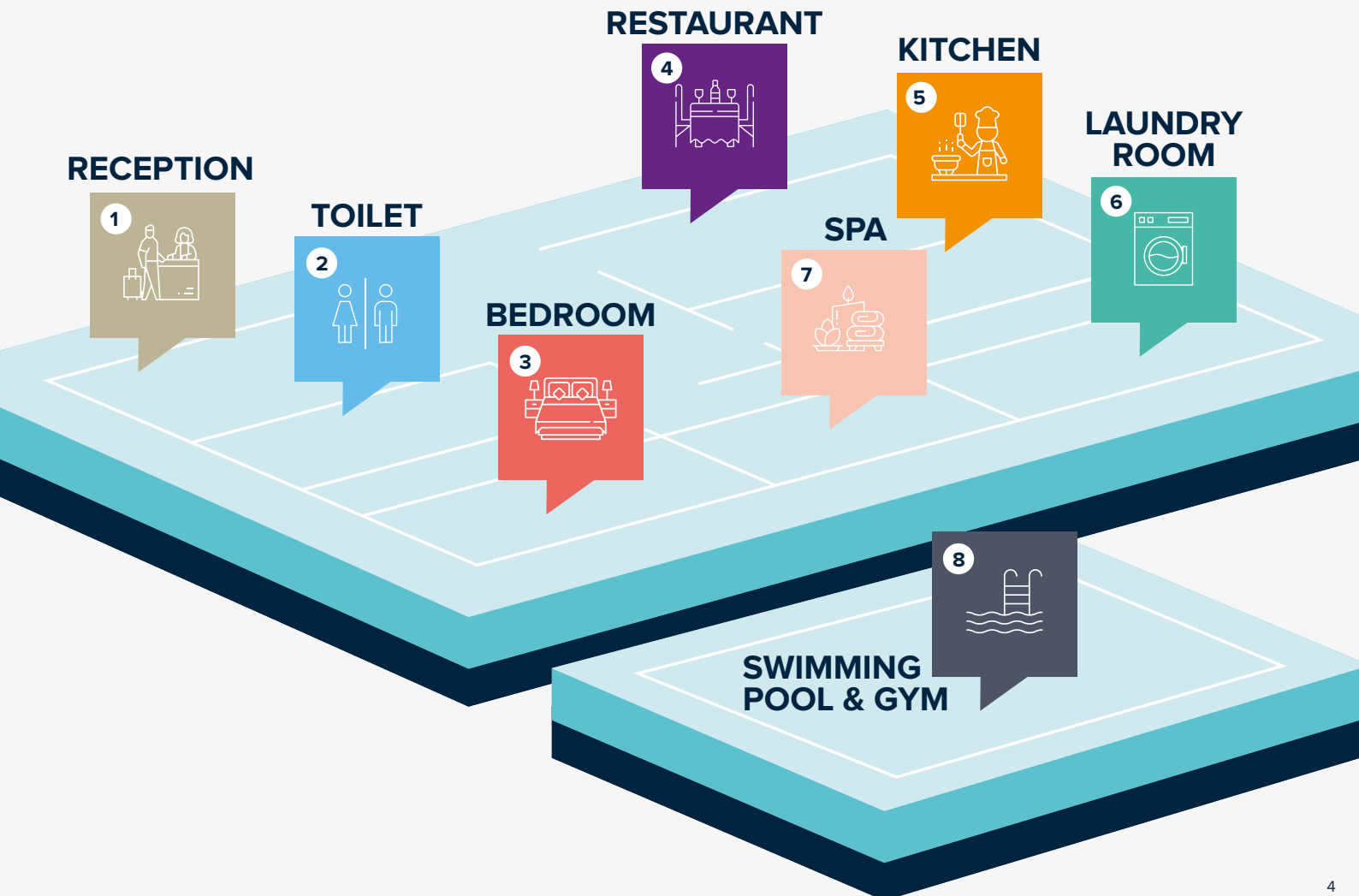
/ Data source: <https://europeantissue.com/it/hygiene/studies/studio-universita-di-westminster-2008>

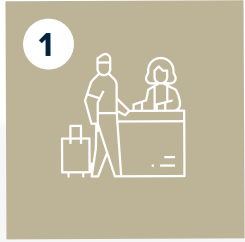
HYGIENE A STRATEGIC VALUE

Hygiene is a priority in the Hospitality Industry. Health regulations require companies to adhere to strict standards of cleanliness in all work areas. For this reason, Papernet is committed to offering suitable solutions to raise the level of hygiene and safety in all environments, providing, in the scheme below, a valid guide for the care of spaces.

HOSPITALITY INDUSTRY

A SAFE JOURNEY FOR EVERY ENVIRONMENT

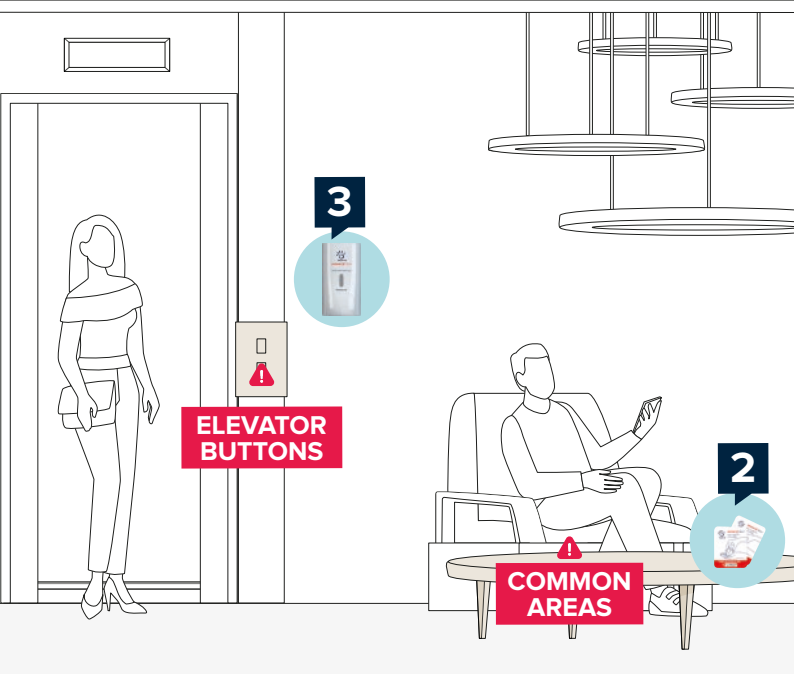
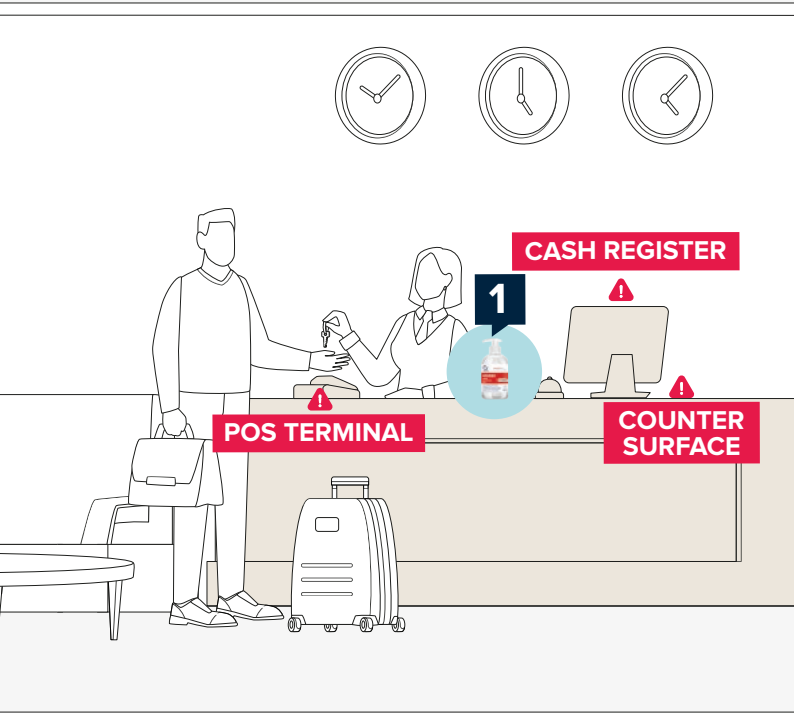




RECEPTION



SURFACES WITH A HIGH PROBABILITY OF CONTAMINATION



1

HAND ALCOHOLIC GEL
Code 419280

Sanitizing gel with **over 70% alcohol** in a 500 ml bottle with a practical dispenser, perfect to guarantee hand hygiene.



2

HAND ALCOHOLIC GEL "MINI DEFEND"
Code 419284

Hand sanitizer gel with **over 70% alcohol** in a practical 1 ml pocket size, perfect to ensure **hand hygiene** always and everywhere.



3

HAND ALCOHOLIC GEL DISPENSER
Code 417829

The **antibacterial material**, present in the plastic and not only on the surface, makes it **completely safe** and **helps decrease the proliferation of germs and bacteria** in the environment.

HAND ALCOHOLIC GEL
Code 417827

Sanitizing gel with **over 70% alcohol**, perfect to guarantee **hand hygiene**.



RECEPTION



1

419280 Hand Alcoholic Gel



Capacity	Pack per case	Pack dimensions	Case dimensions	Case volume	Cases per pallet
ml	n°	cm	cm	m ³	n°
500	6	7x18x7	23.1x21x15.6	0.008	115 (x2)

Gel - Transparent



2

419284 Hand Alcoholic Gel "Mini Defend"



Capacity	Pieces per pack	Pack per case	Pack dimensions	Case dimensions	Case volume	Cases per pallet
ml	n°	n°	cm	cm	m ³	n°
1	250	8	16x14x11.5	40x25x40	0.040	36

Gel - Transparent



3

417829 Hand Alcoholic Gel Dispenser



Pieces per pack	Dispenser height	Dispenser length	Dispenser width	Capacity	Dosage	Case dimensions	Case volume	Cases per pallet
n°	cm	cm	cm	-	ml	cm	m ³	n°
6	22	11.6	13.9	0.50 lt	1	39x25.5x33	0.033	54

Antibacterial



417827

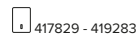


417827 Hand Alcoholic Gel



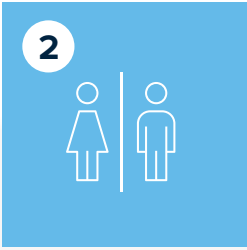
Capacity	Pack per case	Pack dimensions	Case dimensions	Case volume	Cases per pallet
ml	n°	cm	cm	m ³	n°
500	12	8.8x11.7x8	35.9x13x24.2	0.011	63

Gel - Transparent



417829 - 419283

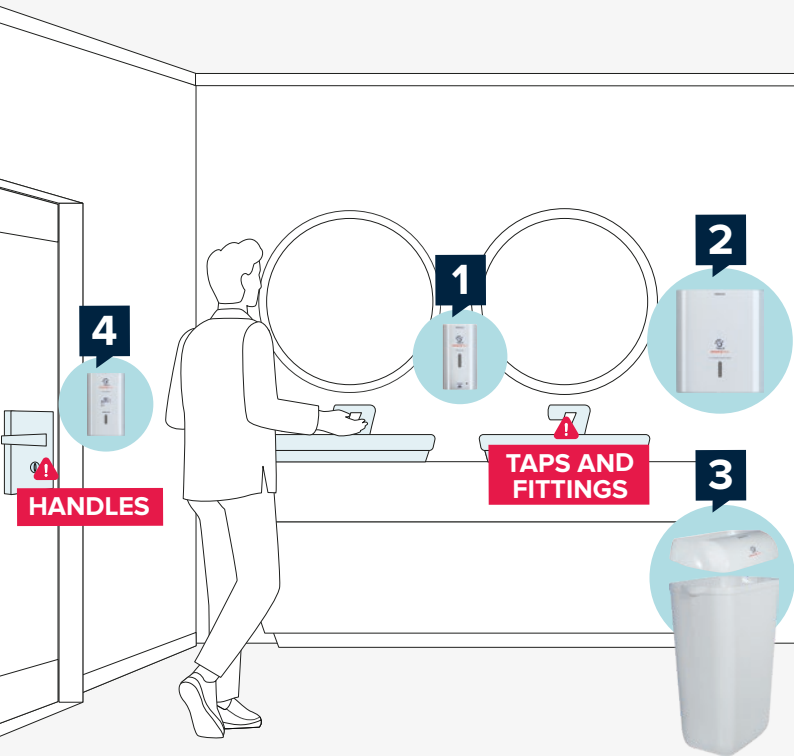




TOILET COMMON AREA



SURFACES WITH A HIGH PROBABILITY OF CONTAMINATION



HYGIENE SOLUTIONS

1

NO TOUCH FOAM SOAP CARTRIDGE DISPENSER
Code 419720



Thanks to **automatic dispensing**, the new **No Touch antibacterial dispenser** for soap protects **hand hygiene**, reducing the risk of contamination.

FOAM SOAP 0,5 LT
Code 411209

FOAM SOAP 1,2 LT
Code 419723

Formulated to **reduce the bacterial load on hands** and **guarantee a deep sanitizing action**.

2

C/V - FOLD HAND TOWEL DISPENSER
Code 416143



Allows a **practical and hygienic single amount** to be dispensed.

V - FOLDED HAND TOWEL
Code 417820

Enriched with a special formula that **counteracts the bacterial load on the hands** during drying and **reduces the proliferation of bacteria in the environment**.

3

LID AND BIN
Code 406629 - 406630



Waste bin with lid.
Available in white and black.

4

DOOR TISSUE DISPENSER
Code 416173



The **antibacterial material**, present in the plastic and not only on the surface, makes it **completely safe** and **helps decrease the proliferation of germs and bacteria** in the environment.

INTERFOLDED HAND TOWEL DOOR TISSUE
Code 417819

The paper is enriched with an **antibacterial formula** that protects the hands from contact with contaminated surfaces.



TOILET COMMON AREA

1

419720 No Touch Foam Soap Cartridge Dispenser



Pieces per pack	Dispenser height	Dispenser length	Dispenser width	Capacity	Dosage	Case dimensions	Case volume	Cases per pallet
n°	cm	cm	cm	-	ml	cm	m³	n°
1	25	12	13.5	0.50 lt - 1.2 lt	0.7	14.5x26x13.8	0.005	216

Antibacterial

411209 - 419723



411209 Foam Soap



Capacity	Pack per case	Pack dimensions	Case dimensions	Case volume	Cases per pallet
ml	n°	cm	cm	m³	n°
500	12	8.8x11.7x8	35.9x13x24.2	0.011	63

Foam Soap - Transparent

419720 - 416150 - 417206

419723 Foam Soap



Capacity	Pack per case	Pack dimensions	Case dimensions	Case volume	Cases per pallet
ml	n°	cm	cm	m³	n°
120	6	12x15.5x10	18x25x32.5	0.014	72

Foam Soap - Transparent

419720

2

416143 C/V - Fold Hand Towel Dispenser



Pieces per pack	Dispenser height	Dispenser length	Dispenser width	Capacity	Case dimensions	Case volume	Cases per pallet
n°	cm	cm	cm	-	cm	m³	n°
1	33.6	30	14.5	Max. 2.5 clips	15.6x35.5x30.8	0.017	105

Antibacterial

Available also: ● Black 417204



417820 V - Folded Hand Towel



Ply	Sheets per piece	Sheet height	Sheet length	Folded dimensions	Case dimensions	Case volume	Packs per case	Cases per pallet
n°	n°	cm	cm	cm	cm	m³	n°	n°
2	210	21	22	22x10.5	55x23x38.5	0.049	15	20 (x2)

Pure cellulose - White

416143 - 417204



3

406630 + 406629 Lid and Bin



Pieces per pack	Dispenser height	Dispenser length	Dispenser width	Capacity	Case dimensions	Case volume	Cases per pallet
n°	cm	cm	cm	-	cm	m³	n°
6	9	34	23	-	35x36.5x23.5	0.030	60
6	49	33	22	23 lt	44.5x72x34.5	0.111	15

Antibacterial

Available also: ● Black 417211 + 417210





TOILET COMMON AREA

TAILORED SOLUTION
HYGIENE BEST PRACTICES



4

416173 Door Tissue Dispenser



Pieces per pack	Dispenser height	Dispenser length	Dispenser width	Capacity	Case dimensions	Case volume	Cases per pallet
n°	cm	cm	cm	-	cm	m³	n°
1	26.5	16.5	13.5	Max. 2.5 clips	17.7x27.7x15.3	0.008	240


Antibacterial
Available also: ● Black 419286



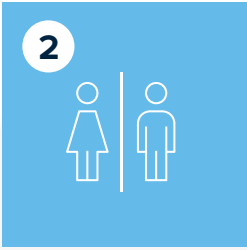
417819 Interfolded Hand Towel Door Tissue



Ply	Sheets per piece	Sheet height	Sheet length	Folded dimensions	Pieces per pack	Case dimensions	Case volume	Packs per case	Cases per pallet
n°	n°	cm	cm	cm	n°	cm	m³	n°	n°
2	200	21	11	11x10.5	6	60x34.5x44	0.091	12	12 (x2)

Pure cellulose - White
●  416173 - 419286

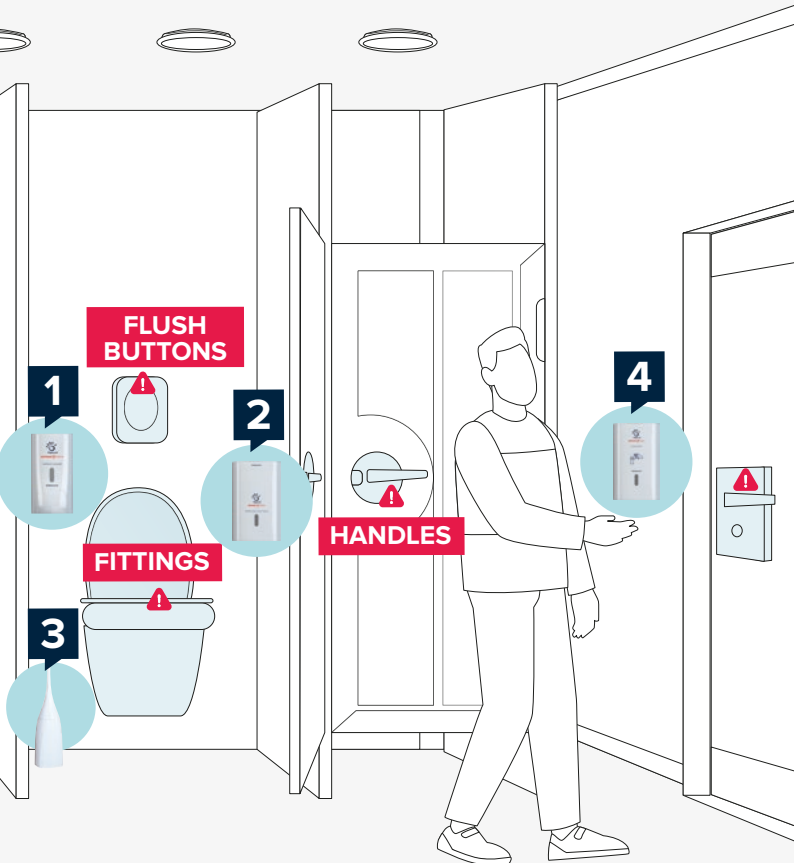




TOILET BATHROOM AREA



SURFACES WITH A HIGH PROBABILITY OF CONTAMINATION



1

SURFACE CLEANER DISPENSER Code 416174



The **antibacterial material**, found in the plastic and not only on the surface, makes it **completely safe** and **contributes to decreasing the proliferation of germs and bacteria** in the environment.

SURFACE CLEANER Code 411215

Ideal for cleaning all surfaces thanks to the action of **active oxygen** and **alcohol**.

2

TOILET TISSUE INTERFOLDED DISPENSER Code 416147



Perfect for very small bathrooms with medium occupancy. **Optimizes waste** by **dispensing one sheet at a time**.

TOILET TISSUE INTERFOLDED Code 417818

New interfolded toilet tissue, **dispensed individually** and packed in an **antibacterial poly** to ensure the **maximum level of prevention**.

3

WC BRUSH Code 406628



For toilet cleaning and hygiene.

4

DOOR TISSUE DISPENSER Code 416173



The **antibacterial material**, present in the plastic and not only on the surface, makes it **completely safe** and **helps decrease the proliferation of germs and bacteria** in the environment.

INTERFOLDED HAND TOWEL DOOR TISSUE Code 417819

The paper is enriched with an **antibacterial formula** that protects the hands from contact with contaminated surfaces.



TOILET BATHROOM AREA



1

416174 Surface Cleaner Dispenser



Pieces per pack	Dispenser height	Dispenser length	Dispenser width	Capacity	Dosage	Case dimensions	Case volume	Cases per pallet
n°	cm	cm	cm	-	ml	cm	m ³	n°
6	22	11.6	13.9	0.50 lt	1	39x25.5x33	0.033	54

Antibacterial



416174

Available also: ● Black 419282



41215 Surface Cleaner



Capacity	Pack per case	Pack dimensions	Case dimensions	Case volume	Cases per pallet
ml	n°	cm	cm	m ³	n°
500	12	8.8x11.7x8	35.9x13x24.2	0.011	63

Detergent - Transparent



416174 - 419282



2

416147 Toilet Tissue Interfolded Dispenser



Pieces per pack	Dispenser height	Dispenser length	Dispenser width	Capacity	Case dimensions	Case volume	Cases per pallet
n°	cm	cm	cm	-	cm	m ³	n°
1	26.5	16.5	13.5	Max. 2.5 clips	17.7x27.7x15.3	0.008	240

Antibacterial

Available also: ● Black 416157



417818 Toilet Tissue Interfolded



Ply	Sheets per piece	Sheet height	Sheet length	Folded dimensions	Pieces per pack	Case dimensions	Case volume	Packs per case	Cases per pallet
n°	n°	cm	cm	cm	n°	cm	m ³	n°	n°
2	200	21	11	11x10.5	6	60x34.5x44	0.091	12	12 (x2)

Pure cellulose - White



416147 - 416157 - 417812



3

406628 WC Brush



Pieces per pack	Dispenser height	Dispenser length	Dispenser width	Case dimensions	Case volume	Cases per pallet
n°	cm	cm	cm	cm	m ³	n°
4	48.5	12	12	24.5x24.5x49	0.029	48

Antibacterial





TOILET BATHROOM AREA

TAILORED SOLUTION
HYGIENE BEST PRACTICES



4

416173

Door Tissue Dispenser



Pieces per pack	Dispenser height	Dispenser length	Dispenser width	Capacity	Case dimensions	Case volume	Cases per pallet
n°	cm	cm	cm	-	cm	m ³	n°
1	26.5	16.5	13.5	Max. 2.5 clips	17.7x27.7x15.3	0.008	240

Antibacterial
Available also: ● Black 419286




417819

Interfolded Hand Towel Door Tissue



Ply	Sheets per piece	Sheet height	Sheet length	Folded dimensions	Pieces per pack	Case dimensions	Case volume	Packs per case	Cases per pallet
n°	n°	cm	cm	cm	n°	cm	m ³	n°	n°
2	200	21	11	11x10.5	6	60x34.5x44	0.091	12	12 (x2)

Pure cellulose - White
 416173 - 419286

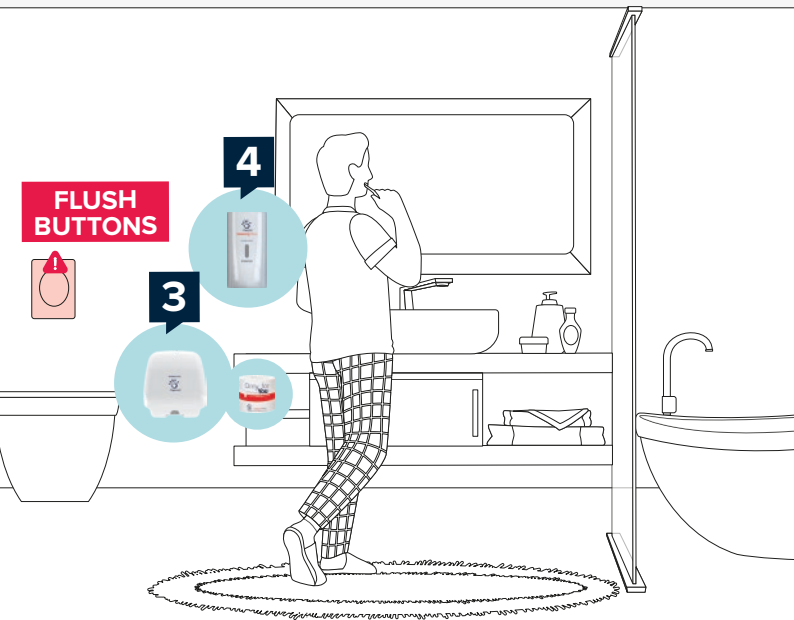
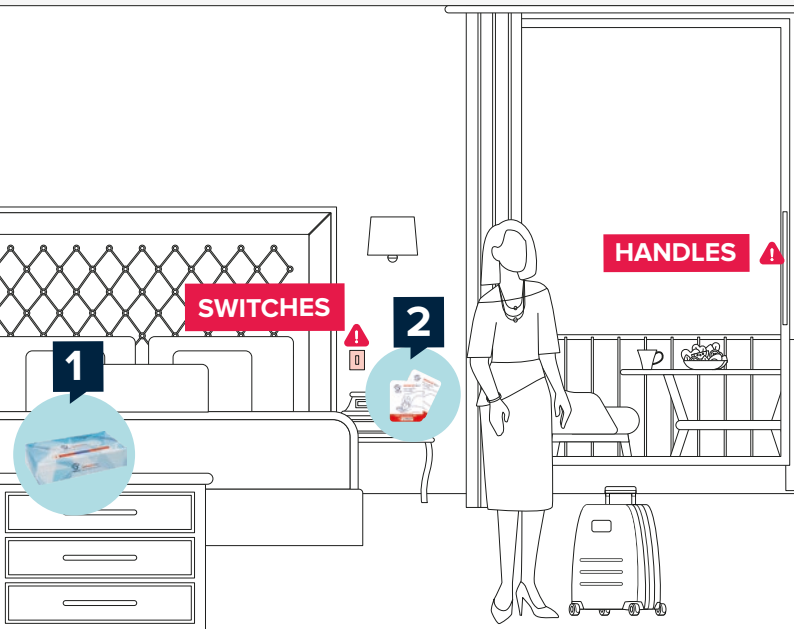




BEDROOM



SURFACES WITH A HIGH PROBABILITY OF CONTAMINATION



1

FACIAL TISSUE Code 415938

UV treated tissues that inhibit bacteria and their proliferation on the paper.



2

HAND ALCOHOLIC GEL "MINI DEFEND" Code 419284

Hand sanitizer gel with **over 70% alcohol** in a practical 1 ml pocket size, perfect to ensure **hand hygiene** always and everywhere.



3

SINGLE ROLL TOILET TISSUE "ONLY FOR YOU" Code 419294

An individually-sealed roll developed to ensure **absolute daily hygiene**. The **antibacterial in the packaging protects the paper from external contamination**, guaranteeing the **maximum level of hygiene and safety**.



TOILET TISSUE MONO ROLL & TOILET TISSUE INTERFOLDED DISPENSER Code 417812

The **antibacterial material**, present in the plastic and not only on the surface, makes it **completely safe** and helps **decrease the proliferation of germs and bacteria** in the environment.



4

LIQUID SOAP DISPENSER Code 416151

The **antibacterial material**, present in the plastic and not only on the surface, makes it **completely safe** and helps **decrease the proliferation of germs and bacteria** in the environment.



ANTIMICROBIAL SOAP 0,5 LT Code 411210

Formulated to **reduce the bacterial load on hands** and **guarantee a deep sanitizing action**.



BEDROOM

TAILORED SOLUTION
HYGIENE BEST PRACTICES



1

415938

Facial Tissue



Ply	Sheets per piece	Sheet height	Sheet length	Case dimensions	Case volume	Packs per case	Cases per pallet
n°	n°	cm	cm	cm	m³	n°	n°
2	100	20	21	40.3x24.7x60.3	0.060	40	36

Pure cellulose - White



2

419284

Hand Alcoholic Gel "Mini Defend"



Capacity	Pieces per pack	Pack per case	Pack dimensions	Case dimensions	Case volume	Cases per pallet
ml	n°	n°	cm	cm	m³	n°
1	250	8	16x14x11.5	40x25x40	0.040	36

Gel - Transparent



3

417812

Toilet Tissue Mono Roll & Toilet Tissue Interfolded Dispenser



Pieces per pack	Dispenser height	Dispenser length	Dispenser width	Capacity	Case dimensions	Case volume	Cases per pallet
n°	cm	cm	cm	-	cm	m³	n°
2	16.6	14.5	14.7	1 clip / Max. ø cm 14 x 10.5	30x17.5x15	0.008	220

Antibacterial



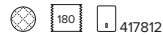
419294

Single Roll Toilet Tissue "Only for you"



Ply	Sheets per piece	Roll length	Sheet height	Sheet length	Roll diameter	Core diameter	Pieces per pack	Case dimensions	Case volume	Packs per case	Cases per pallet
n°	n°	mt	cm	cm	cm	cm	n°	cm	m³	n°	n°
2	180	19.8	9.5	11	10.2	4.5	18	58x29x80	0.135	8	8 (x2)

Pure cellulose - White



4

416151

Liquid Soap Dispenser



Pieces per pack	Dispenser height	Dispenser length	Dispenser width	Capacity	Dosage	Case dimensions	Case volume	Cases per pallet
n°	cm	cm	cm	-	ml	cm	m³	n°
6	22	11.6	13.9	0.50 lt	1	39x25.5x33	0.033	54

Antibacterial

411210

Available also: ● Black 416158



411210

Antimicrobial Soap

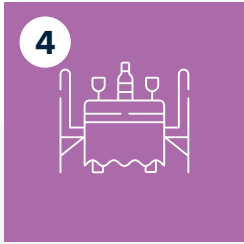


Capacity	Pack per case	Pack dimensions	Case dimensions	Case volume	Cases per pallet
ml	n°	cm	cm	m³	n°
500	12	8.8x11.7x8	35.9x13x24.2	0.011	63

Soap - Transparent

416151 - 416158

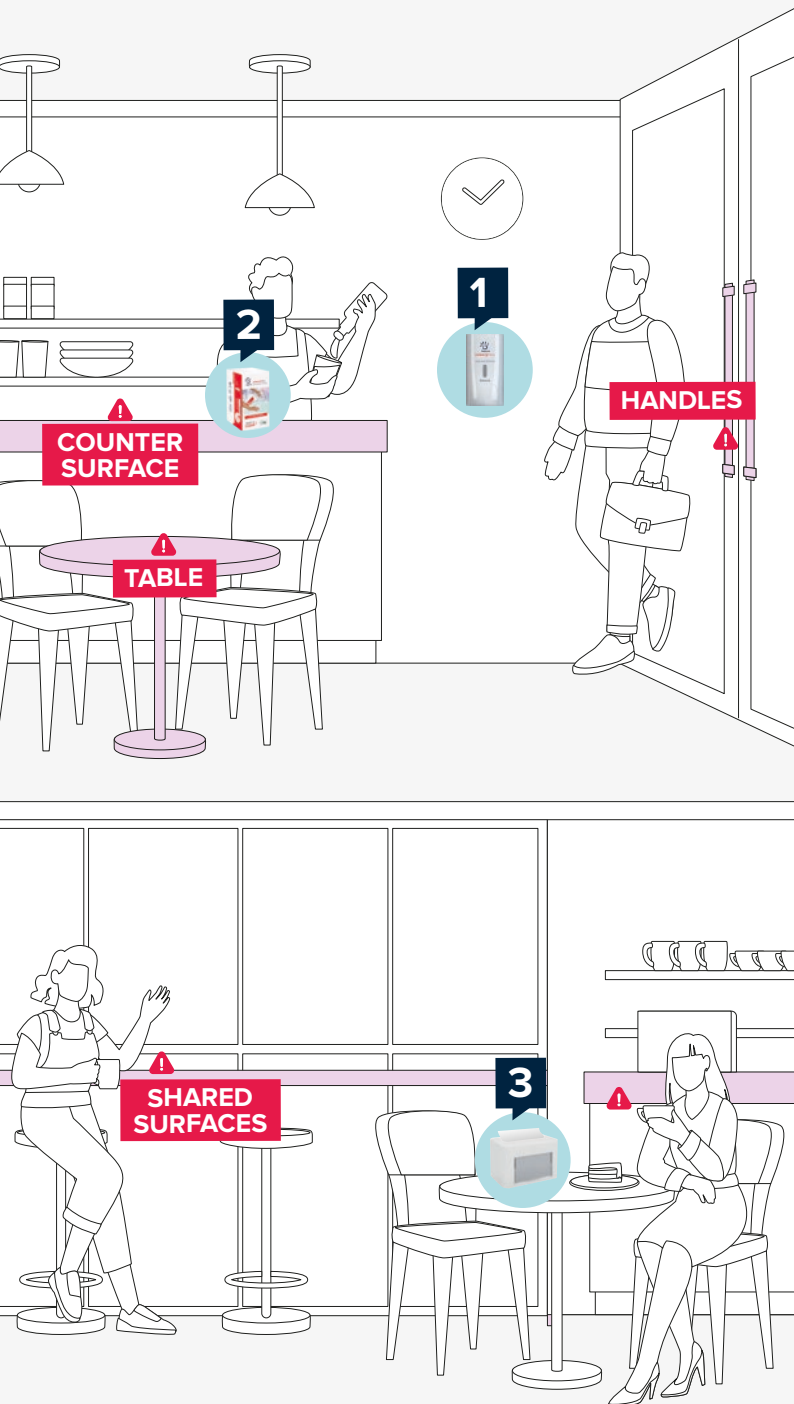




RESTAURANT



SURFACES WITH A HIGH PROBABILITY OF CONTAMINATION



HYGIENE SOLUTIONS

1

HAND ALCOHOLIC GEL DISPENSER
Code 417829



The **antibacterial material**, present in the plastic and not only on the surface, makes it **completely safe** and **helps decrease the proliferation of germs and bacteria** in the environment.

HAND ALCOHOLIC GEL
Code 417827

Sanitizing gel with **over 70% alcohol**, perfect to guarantee **hand hygiene**.

2

WIPES "FAST & CLEAN"
Code 419295



Multi-purpose wipes for cleaning any surface and environment. A **practical and fast** solution which guarantees the **maximum level of protection and hygiene** thanks to the **antibacterial additive** present in the packaging.

SURFACE CLEANER SPRAY
Code 419277

Spray cleaner ideal for all surfaces thanks to the action of the **active oxygen** and **alcohol**.

3

INTERFOLDED NAPKINS DISPENSER SUPERIOR/BASIC
Code 417192/417194



The **antibacterial material**, present in the plastic and not only on the surface, makes it completely safe and helps **decrease the proliferation of germs and bacteria** in the environment. **Papernet Ready Table Superior Dispensers** can be **personalized with communication or advertising materials**.

Available colours



QUARTER-FOLD NAPKINS INTERFOLDED
Code 416192



The **antibacterial additive** in the poly guarantees a greater **protection from external contamination agents** while the **easy opening** allows a single napkin to be taken.



RESTAURANT



1

417829

Hand Alcoholic Gel Dispenser



Pieces per pack	Dispenser height	Dispenser length	Dispenser width	Capacity	Dosage	Case dimensions	Case volume	Cases per pallet
n°	cm	cm	cm	-	ml	cm	m³	n°
6	22	11.6	13.9	0.50 lt	1	39x25.5x33	0.033	54

Antibacterial



2

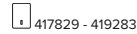
417827

Hand Alcoholic Gel



Capacity	Pack per case	Pack dimensions	Case dimensions	Case volume	Cases per pallet
ml	n°	cm	cm	m³	n°
500	12	8.8x11.7x8	35.9x13x24.2	0.011	63

Gel - Transparent



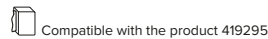
419277

Surface Cleaner Spray



Capacity	Pack per case	Pack dimensions	Case dimensions	Case volume	Cases per pallet
ml	n°	cm	cm	m³	n°
750	6	9.5x25.5x6	17.5x29x26	0.013	72 (x2)

Detergent - Transparent



419295

Wipes "Fast & Clean"



Ply	Sheets per piece	Sheet height	Sheet length	Folded dimensions	Case dimensions	Case volume	Packs per case	Cases per pallet
n°	n°	cm	cm	cm	cm	m³	n°	n°
2	100	33.25	21.6	16.6x10.8	55x18.1x40.5	0.040	20	24 (x2)

Pure cellulose - White



3

417194

Interfolded Napkins Dispenser Basic



Pieces per pack	Dispenser height	Dispenser length	Dispenser width	Capacity	Case dimensions	Case volume	Cases per pallet
n°	cm	cm	cm	-	cm	m³	n°
8	12.5	17.8	11.5	Max. 1 clip	37x26.5x25	0.025	63

Available also:



417192

Interfolded Napkins Dispenser Superior



Pieces per pack	Dispenser height	Dispenser length	Dispenser width	Capacity	Case dimensions	Case volume	Cases per pallet
n°	cm	cm	cm	-	cm	m³	n°
6	12.6	20	13.3	Max. 1 clip	41x15x41.5	0.026	76

Available also:



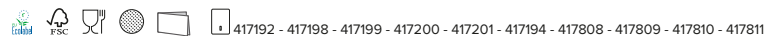
416192

Quarter-Fold Napkins Interfolded



Ply	Sheets per piece	Sheet height	Sheet length	Folded dimensions	Pieces per pack	Case dimensions	Case volume	Packs per case	Cases per pallet
n°	n°	cm	cm	cm	n°	cm	m³	n°	n°
2	110	21.6	33.2	16.6x10.8	1	34.8x55x40.5	0.078	40	12 (x2)

Pure cellulose - White

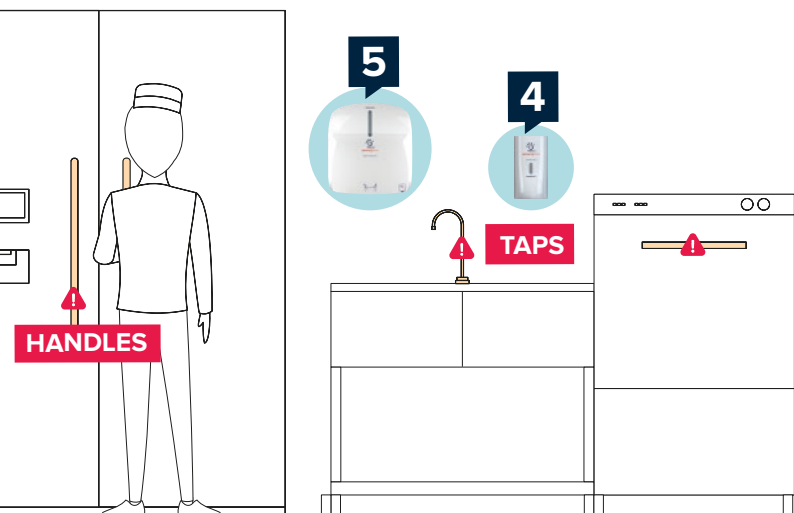
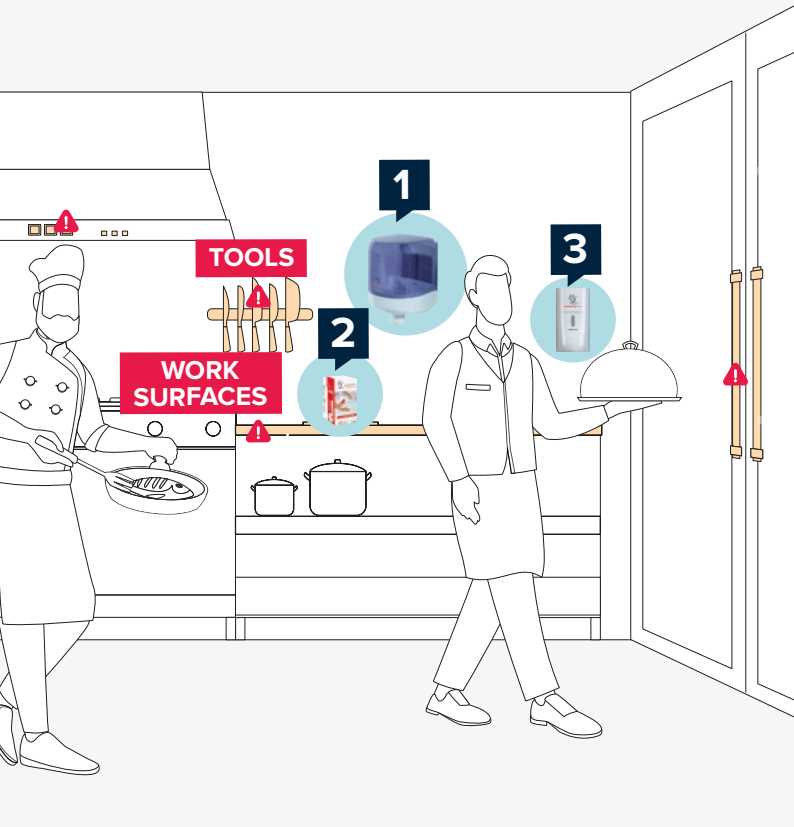




KITCHEN



SURFACES WITH A HIGH PROBABILITY OF CONTAMINATION



HYGIENE SOLUTIONS

1

CENTREFEED HAND TOWEL DISPENSER

Code 416167

Centrefeed paper dispenser to optimize consumption and space.



HAND TOWEL ROLLS CENTREFEED

Code 401596

Centrefeed roll, an effective tool to ensure the hygiene of work spaces. Suitable for food contact.



2

WIPES "FAST & CLEAN"

Code 419295

Multi-purpose wipes for cleaning any surface and environment. A practical and fast solution which guarantees the maximum level of protection and hygiene thanks to the antibacterial additive present in the packaging.



SURFACE CLEANER SPRAY

Code 419277

Spray cleaner ideal for all surfaces thanks to the action of the active oxygen and alcohol.

3

HAND ALCOHOLIC GEL DISPENSER

Code 417829

The antibacterial material, present in the plastic and not only on the surface, makes it completely safe and helps decrease the proliferation of germs and bacteria in the environment.



HAND ALCOHOLIC GEL

Code 417827

Sanitizing gel with over 70% alcohol, perfect to guarantee hand hygiene.

4

LIQUID SOAP DISPENSER

Code 416151

The antibacterial material, present in the plastic and not only on the surface, makes it completely safe and helps decrease the proliferation of germs and bacteria in the environment.



ANTIMICROBIAL SOAP 0,5 LT

Code 411210

Formulated to reduce the bacterial load on hands and guarantee a deep sanitizing action.

5

MINI AUTOCUT DISPENSER

Code 416155

Allows for single-tear dispensing for safer drying without waste.



HAND TOWEL ROLLS AUTOCUT

Code 412090

Enriched with an antibacterial formula which makes it ideal for prolonging the bacteriostatic action during hand drying.



KITCHEN

TAILORED SOLUTION
HYGIENE BEST PRACTICES



1

416167

Centrefeed Hand Towel Dispenser



Pieces per pack	Dispenser height	Dispenser length	Dispenser width	Capacity	Case dimensions	Case volume	Cases per pallet
n°	cm	cm	cm	-	cm	m³	n°
4	37.5	25.6	27.5	Max. Ø cm 24 x 24 h	55.5x39x52.5	0.114	16

Antibacterial



401596

Hand Towel Rolls Centrefeed



Ply	Sheets per piece	Roll length	Sheet height	Sheet length	Roll diameter	Core diameter	Pieces per pack	Case dimensions	Case volume	Packs per case	Cases per pallet
n°	n°	mt	cm	cm	cm	cm	n°	cm	m³	n°	n°
2	450	137	19.7	30	19.2	6	6	19.7x38.5x58	0.044	1	44

Pure cellulose - White

416144 - 417208 - 416167

2

419277

Surface Cleaner Spray



Capacity	Pack per case	Pack dimensions	Case dimensions	Case volume	Cases per pallet
ml	n°	cm	cm	m³	n°
750	6	9.5x25.5x6	17.5x29x26	0.013	72 (x2)

Detergent - Transparent

Compatible with the product 419295



419295

Wipes "Fast & Clean"



Ply	Sheets per piece	Sheet height	Sheet length	Folded dimensions	Case dimensions	Case volume	Packs per case	Cases per pallet
n°	n°	cm	cm	cm	cm	m³	n°	n°
2	100	33.25	21.6	16.6x10.8	55x18.1x40.5	0.040	20	24 (x2)

Pure cellulose - White

Compatible with the product 419277



3

417829

Hand Alcoholic Gel Dispenser



Pieces per pack	Dispenser height	Dispenser length	Dispenser width	Capacity	Dosage	Case dimensions	Case volume	Cases per pallet
n°	cm	cm	cm	-	ml	cm	m³	n°
6	22	11.6	13.9	0.50 lt	1	39x25.5x33	0.033	54

Antibacterial

417827



417827

Hand Alcoholic Gel



Capacity	Pack per case	Pack dimensions	Case dimensions	Case volume	Cases per pallet
ml	n°	cm	cm	m³	n°
500	12	8.8x11.7x8	35.9x13x24.2	0.011	63

Gel - Transparent

417829 - 419283





KITCHEN



4

416151

Liquid Soap Dispenser



Pieces per pack	Dispenser height	Dispenser length	Dispenser width	Capacity	Dosage	Case dimensions	Case volume	Cases per pallet
n°	cm	cm	cm	-	ml	cm	m ³	n°
6	22	11.6	13.9	0.50 lt	1	39x25.5x33	0.033	54

Antibacterial

411210

Available also: ● Black 416158



411210

Antimicrobial Soap



Capacity	Pack per case	Pack dimensions	Case dimensions	Case volume	Cases per pallet
ml	n°	cm	cm	m ³	n°
500	12	8.8x11.7x8	35.9x13x24.2	0.011	63

Soap - Transparent

416151 - 416158



5

416155

Mini Autocut Dispenser



Pieces per pack	Dispenser height	Dispenser length	Dispenser width	Capacity	Case dimensions	Case volume	Cases per pallet
n°	cm	cm	cm	-	cm	m ³	n°
1	37.1	33	22.1	Max. ø cm 20 x 21 h	34x38x23	0.030	50

Antibacterial

Available also: ● Black 417209



412090

Hand Towel Rolls Autocut

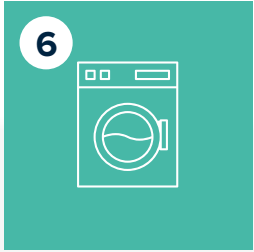


Ply	Sheets per piece	Roll length	Sheet height	Sheet length	Roll diameter	Core diameter	Pieces per pack	Case dimensions	Case volume	Packs per case	Cases per pallet
n°	n°	mt	cm	cm	cm	cm	n°	cm	m ³	n°	n°
2	1	140	19.8	14000	18.5	3.9	6	55.5x19.8x37	0.041	1	44

Pure cellulose - White

416155 - 417209

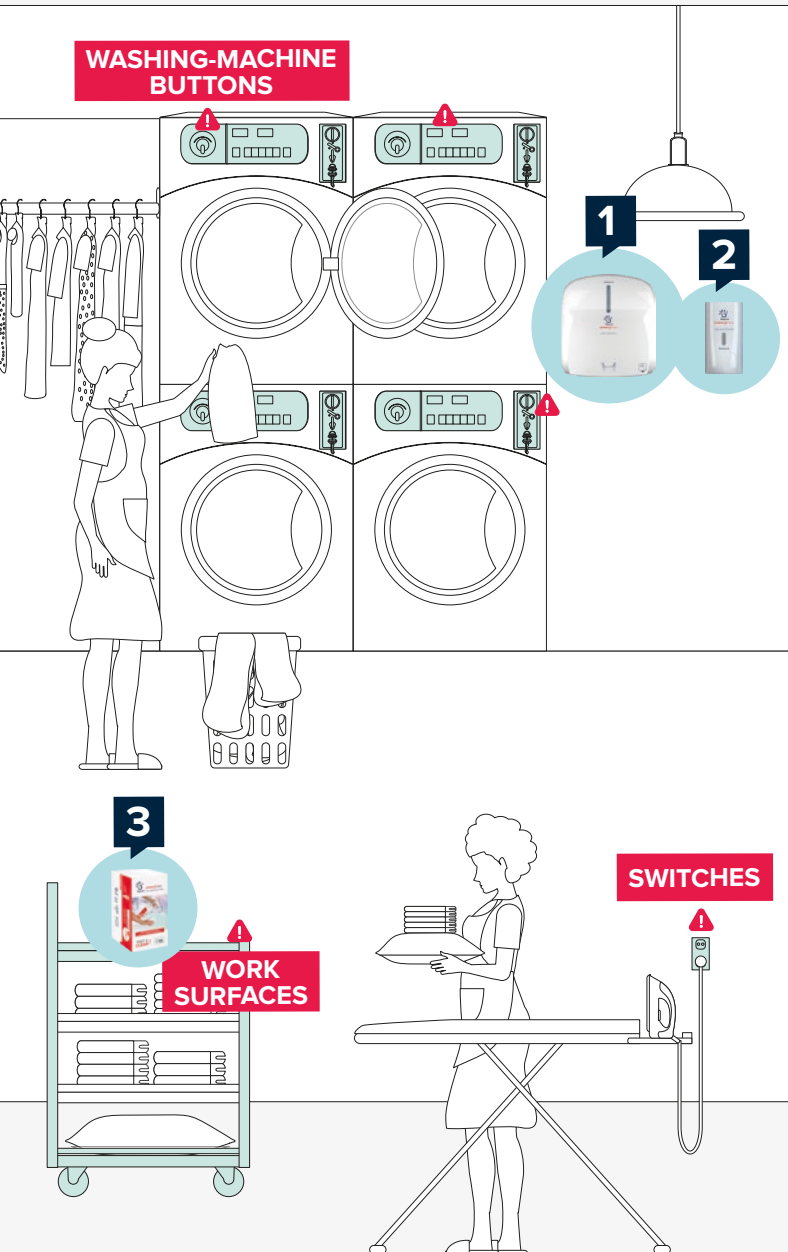




LAUNDRY ROOM



SURFACES WITH A HIGH PROBABILITY OF CONTAMINATION



HYGIENE SOLUTIONS

1

MINI AUTOCUT DISPENSER
Code 416155



Allows for single-tear dispensing for **safer drying without waste.**

HAND TOWEL ROLLS AUTOCUT
Code 412090



Enriched with an **antibacterial formula** which makes it ideal for prolonging the **bacteriostatic action** during hand drying.

2

HAND ALCOHOLIC GEL DISPENSER
Code 417829



The **antibacterial material**, present in the plastic and not only on the surface, makes it **completely safe** and **helps decrease the proliferation of germs and bacteria** in the environment.

HAND ALCOHOLIC GEL
Code 417827

Sanitizing gel with **over 70% alcohol**, perfect to guarantee **hand hygiene.**

3

WIPES "FAST & CLEAN"
Code 419295



Multi-purpose wipes for cleaning any surface and environment. A **practical and fast** solution which guarantees the **maximum level of protection and hygiene** thanks to the **antibacterial additive** present in the packaging.

SURFACE CLEANER SPRAY
Code 419277

Spray cleaner ideal for all surfaces thanks to the action of the **active oxygen and alcohol.**



LAUNDRY ROOM

TAILORED SOLUTION
HYGIENE BEST PRACTICES



1

416155 Mini Autocut Dispenser



Pieces per pack	Dispenser height	Dispenser length	Dispenser width	Capacity	Case dimensions	Case volume	Cases per pallet
n°	cm	cm	cm	-	cm	m³	n°
1	37.1	33	22.1	Max. ø cm 20 x 21 h	34x38x23	0.030	50

Antibacterial
Available also: ● Black 417209



412090 Hand Towel Rolls Autocut



Ply	Sheets per piece	Roll length	Sheet height	Sheet length	Roll diameter	Core diameter	Pieces per pack	Case dimensions	Case volume	Packs per case	Cases per pallet
n°	n°	mt	cm	cm	cm	cm	n°	cm	m³	n°	n°
2	1	140	19.8	14000	18.5	3.9	6	55.5x19.8x37	0.041	1	44

Pure cellulose - White
● 416155 - 417209



2

417829 Hand Alcoholic Gel Dispenser



Pieces per pack	Dispenser height	Dispenser length	Dispenser width	Capacity	Dosage	Case dimensions	Case volume	Cases per pallet
n°	cm	cm	cm	-	ml	cm	m³	n°
6	22	11.6	13.9	0.50 lt	1	39x25.5x33	0.033	54

Antibacterial
☑ 417827



417827 Hand Alcoholic Gel



Capacity	Pack per case	Pack dimensions	Case dimensions	Case volume	Cases per pallet
ml	n°	cm	cm	m³	n°
500	12	8.8x11.7x8	35.9x13x24.2	0.011	63

Gel - Transparent
☑ 417829 - 419283



3

419277 Surface Cleaner Spray



Capacity	Pack per case	Pack dimensions	Case dimensions	Case volume	Cases per pallet
ml	n°	cm	cm	m³	n°
750	6	9.5x25.5x6	17.5x29x26	0.013	72 (x2)

Detergent - Transparent
☑ Compatible with the product 419295



419295 Wipes "Fast & Clean"



Ply	Sheets per piece	Sheet height	Sheet length	Folded dimensions	Case dimensions	Case volume	Packs per case	Cases per pallet
n°	n°	cm	cm	cm	cm	m³	n°	n°
2	100	33.25	21.6	16.6x10.8	55x18.1x40.5	0.040	20	24 (x2)

Pure cellulose - White
♻️ ♻️ ♻️ ♻️ ♻️ Compatible with the product 419277

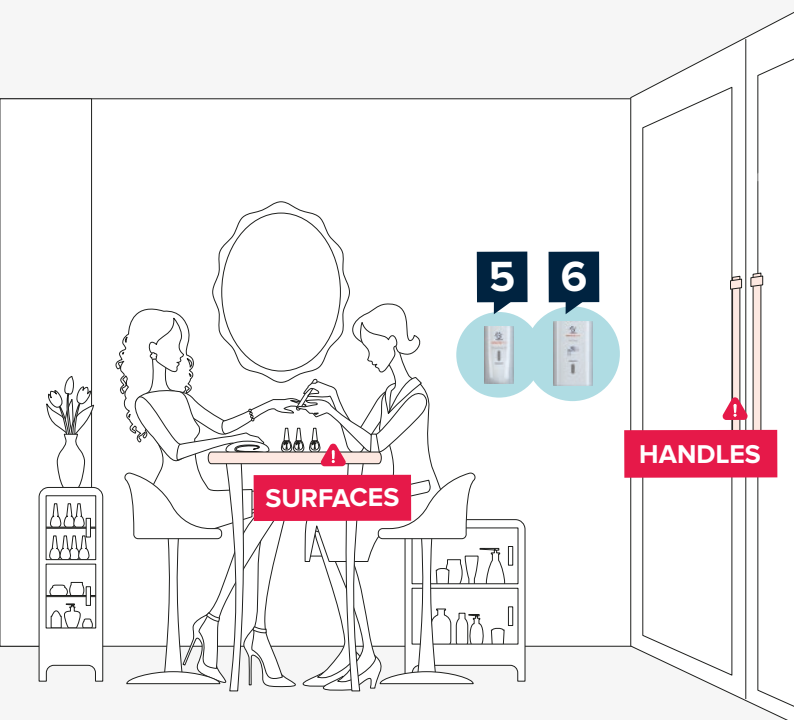
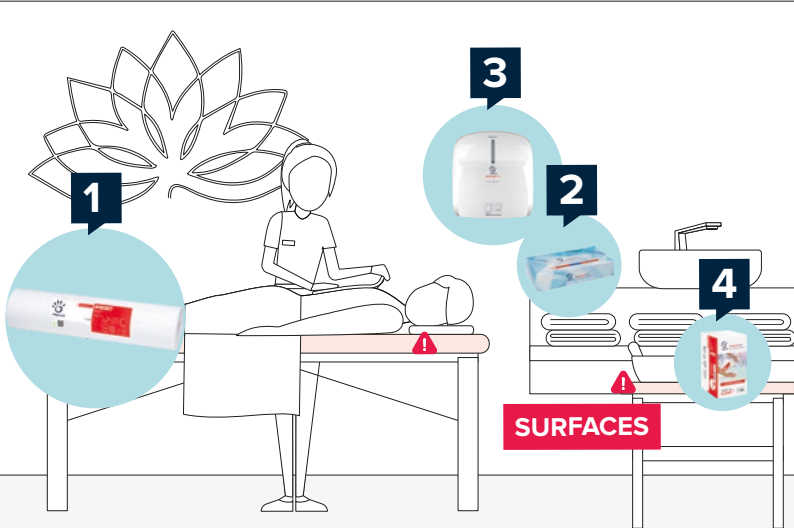




SPA



SURFACES WITH A HIGH PROBABILITY OF CONTAMINATION



HYGIENE SOLUTIONS

1

MEDICAL ROLLS
Code 419287

Enriched with a **special antibacterial formula** that **reduces the proliferation of germs and bacteria**.



2

FACIAL TISSUE
Code 415938

UV treated tissues that **inhibit bacteria and their proliferation** on the paper.



3

ELECTRONIC MINI AUTOCUT DISPENSER
Code 416153

Thanks to automatic dispensing, the **No Touch Autocut** antibacterial dispenser **protects hand hygiene**, reducing the risk of contamination.



4

WIPES "FAST & CLEAN"
Code 419295

Multi-purpose wipes for cleaning any surface and environment. A **practical and fast** solution which guarantees the **maximum level of protection and hygiene** thanks to the **antibacterial additive** present in the packaging.



SURFACE CLEANER SPRAY
Code 419277

Spray cleaner ideal for all surfaces thanks to the action of the **active oxygen** and **alcohol**.

5

HAND ALCOHOLIC GEL DISPENSER
Code 417829

The **antibacterial material**, present in the plastic and not only on the surface, makes it **completely safe** and **helps decrease the proliferation of germs and bacteria** in the environment.



6

DOOR TISSUE DISPENSER
Code 416173

The **antibacterial material**, present in the plastic and not only on the surface, makes it **completely safe** and **helps decrease the proliferation of germs and bacteria** in the environment.



INTERFOLDED HAND TOWEL DOOR TISSUE
Code 417819

The paper is enriched with an **antibacterial formula** that protects the hands from contact with contaminated surfaces.



SPA

TAILORED SOLUTION
HYGIENE BEST PRACTICES



1

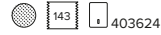
419287

Medical Rolls



Ply	Sheets per piece	Roll length	Sheet height	Sheet length	Roll diameter	Core diameter	Pieces per pack	Case dimensions	Case volume	Packs per case	Cases per pallet
n°	n°	mt	cm	cm	cm	cm	n°	cm	m³	n°	n°
2	143	50	59	35	12.4	5.1	1	38.3x60.1x38.3	0.088	9	24

Pure cellulose - White



2

415938

Facial Tissue



Ply	Sheets per piece	Sheet height	Sheet length	Case dimensions	Case volume	Packs per case	Cases per pallet
n°	n°	cm	cm	cm	m³	n°	n°
2	100	20	21	40.3x24.7x60.3	0.060	40	36

Pure cellulose - White



3

416153

Electronic Mini Autocut Dispenser



Pieces per pack	Dispenser height	Dispenser length	Dispenser width	Capacity	Case dimensions	Case volume	Cases per pallet
n°	cm	cm	cm	-	cm	m³	n°
1	37.1	33	22.1	Max. Ø cm 20 x 21 h	34x38.5x23	0.033	50

Antibacterial



412090

Hand Towel Rolls Autocut



Ply	Sheets per piece	Roll length	Sheet height	Sheet length	Roll diameter	Core diameter	Pieces per pack	Case dimensions	Case volume	Packs per case	Cases per pallet
n°	n°	mt	cm	cm	cm	cm	n°	cm	m³	n°	n°
2	1	140	19.8	14000	18.5	3.9	6	55.5x19.8x37	0.041	1	44

Pure cellulose - White





SPA

TAILORED SOLUTION
HYGIENE BEST PRACTICES



4

419277

Surface Cleaner Spray



Capacity	Pack per case	Pack dimensions	Case dimensions	Case volume	Cases per pallet
ml	n°	cm	cm	m ³	n°
750	6	9.5x25.5x6	17.5x29x26	0.013	72 (x2)

Detergent - Transparent

Compatible with the product 419295



419295

Wipes "Fast & Clean"



Ply	Sheets per piece	Sheet height	Sheet length	Folded dimensions	Case dimensions	Case volume	Packs per case	Cases per pallet
n°	n°	cm	cm	cm	cm	m ³	n°	n°
2	100	33.25	21.6	16.6x10.8	55x18.1x40.5	0.040	20	24 (x2)

Pure cellulose - White

Compatible with the product 419277



5

417829

Hand Alcoholic Gel Dispenser



Pieces per pack	Dispenser height	Dispenser length	Dispenser width	Capacity	Dosage	Case dimensions	Case volume	Cases per pallet
n°	cm	cm	cm	-	ml	cm	m ³	n°
6	22	11.6	13.9	0.50 lt	1	39x25.5x33	0.033	54

Antibacterial

417827



417827

Hand Alcoholic Gel



Capacity	Pack per case	Pack dimensions	Case dimensions	Case volume	Cases per pallet
ml	n°	cm	cm	m ³	n°
500	12	8.8x11.7x8	35.9x13x24.2	0.011	63

Gel - Transparent

417829 - 419283



6

416173

Door Tissue Dispenser



Pieces per pack	Dispenser height	Dispenser length	Dispenser width	Capacity	Case dimensions	Case volume	Cases per pallet
n°	cm	cm	cm	-	cm	m ³	n°
1	26.5	16.5	13.5	Max. 2.5 clips	17.7x27.7x15.3	0.008	240

Antibacterial

Available also: ● Black 419286



417819

Interfolded Hand Towel Door Tissue

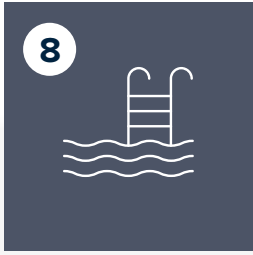


Ply	Sheets per piece	Sheet height	Sheet length	Folded dimensions	Pieces per pack	Case dimensions	Case volume	Packs per case	Cases per pallet
n°	n°	cm	cm	cm	n°	cm	m ³	n°	n°
2	200	21	11	11x10.5	6	60x34.5x44	0.091	12	12 (x2)

Pure cellulose - White

416173 - 419286

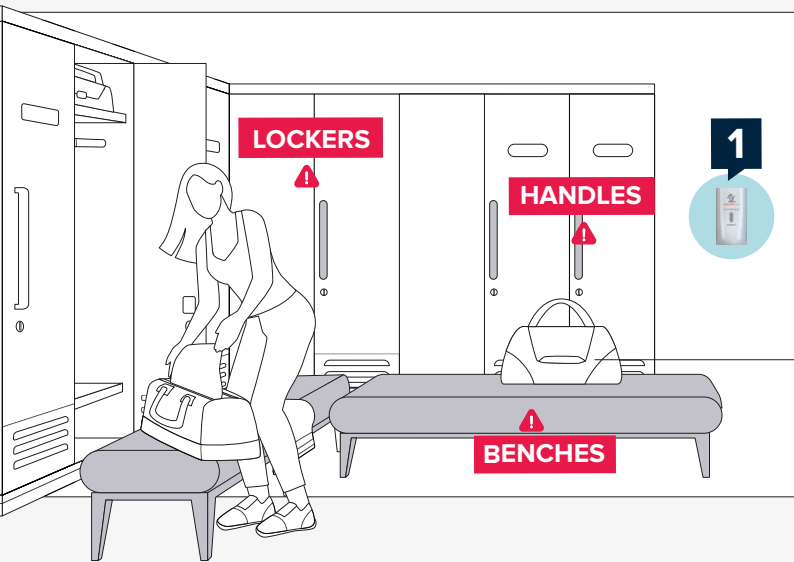
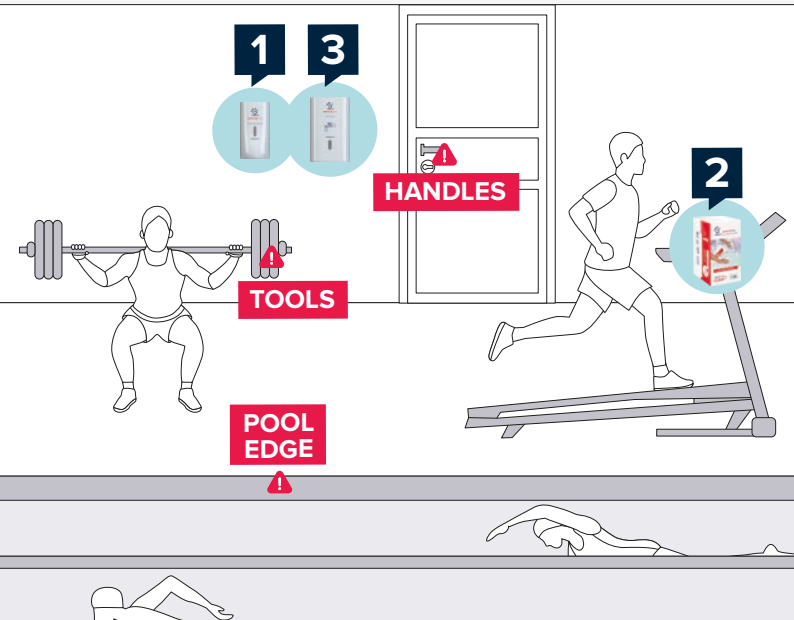




SWIMMING POOL AND GYM



SURFACES WITH A HIGH PROBABILITY OF CONTAMINATION



HYGIENE SOLUTIONS

1

HAND ALCOHOLIC GEL DISPENSER
Code 417829



The **antibacterial material**, present in the plastic and not only on the surface, makes it **completely safe** and **helps decrease the proliferation of germs and bacteria** in the environment.

HAND ALCOHOLIC GEL
Code 417827

Sanitizing gel with **over 70% alcohol**, perfect to guarantee **hand hygiene**.

2

WIPES "FAST & CLEAN"
Code 419295



Multi-purpose wipes for cleaning any surface and environment. A **practical and fast** solution which guarantees the **maximum level of protection and hygiene** thanks to the **antibacterial additive** present in the packaging.

SURFACE CLEANER SPRAY
Code 419277

Spray cleaner ideal for all surfaces thanks to the action of the **active oxygen and alcohol**.

3

DOOR TISSUE DISPENSER
Code 416173



The **antibacterial material**, present in the plastic and not only on the surface, makes it **completely safe** and **helps decrease the proliferation of germs and bacteria** in the environment.

INTERFOLDED HAND TOWEL DOOR TISSUE
Code 417819

The paper is enriched with an **antibacterial formula** that protects the hands from contact with contaminated surfaces.



SWIMMING POOL AND GYM

TAILORED SOLUTION
HYGIENE BEST PRACTICES



1

417829

Hand Alcoholic Gel Dispenser



Pieces per pack	Dispenser height	Dispenser length	Dispenser width	Capacity	Dosage	Case dimensions	Case volume	Cases per pallet
n°	cm	cm	cm	-	ml	cm	m ³	n°
6	22	11.6	13.9	0.50 lt	1	39x25.5x33	0.033	54

Antibacterial



DEFEND+ TECH

2

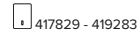
417827

Hand Alcoholic Gel



Capacity	Pack per case	Pack dimensions	Case dimensions	Case volume	Cases per pallet
ml	n°	cm	cm	m ³	n°
500	12	8.8x11.7x8	35.9x13x24.2	0.011	63

Gel - Transparent



DEFEND+ TECH

3

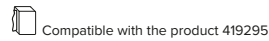
419277

Surface Cleaner Spray



Capacity	Pack per case	Pack dimensions	Case dimensions	Case volume	Cases per pallet
ml	n°	cm	cm	m ³	n°
750	6	9.5x25.5x6	17.5x29x26	0.013	72 (x2)

Detergent - Transparent



DEFEND+ TECH

419295

Wipes "Fast & Clean"



Ply	Sheets per piece	Sheet height	Sheet length	Folded dimensions	Case dimensions	Case volume	Packs per case	Cases per pallet
n°	n°	cm	cm	cm	cm	m ³	n°	n°
2	100	33.25	21.6	16.6x10.8	55x18.1x40.5	0.040	20	24 (x2)

Pure cellulose - White



DEFEND+ TECH

416173

Door Tissue Dispenser



Pieces per pack	Dispenser height	Dispenser length	Dispenser width	Capacity	Case dimensions	Case volume	Cases per pallet
n°	cm	cm	cm	-	cm	m ³	n°
1	26.5	16.5	13.5	Max. 2.5 clips	17.7x27.7x15.3	0.008	240

Antibacterial

Available also: ● Black 419286

DEFEND+ TECH

417819

Interfolded Hand Towel Door Tissue



Ply	Sheets per piece	Sheet height	Sheet length	Folded dimensions	Pieces per pack	Case dimensions	Case volume	Packs per case	Cases per pallet
n°	n°	cm	cm	cm	n°	cm	m ³	n°	n°
2	200	21	11	11x10.5	6	60x34.5x44	0.091	12	12 (x2)

Pure cellulose - White



DEFEND+ TECH

TOILET



V - Folded Hand Towel Dissolve Tech	Code	411169
V - Folded Hand Towel Dissolve Tech	Code	411167
V - Folded Hand Towel Bio Tech	Code	407572
Hand Towel Rolls Autocut Dissolve Tech	Code	416598
Toilet Tissue Interfolded Bio Tech	Code	407571
Toilet Tissue Maxi Jumbo Bio Tech	Code	407567
Toilet Tissue Mini Jumbo Bio Tech	Code	407574
Toilet Tissue Maxi Jumbo Dissolve Tech	Code	416163
Toilet Tissue Mini Jumbo Dissolve Tech	Code	416162
No Touch Liquid Soap Refillable Dispenser Defend Tech	Code	419721
Liquid Soap 5 Lt	Code	413123

KITCHEN



Hand Towel Rolls Autocut Dry Tech	Code	407558
Hand Towel Rolls Autocut Dry Tech	Code	416623
Hand Towel Rolls Centrefeed Papernet No Tech	Code	412056
Wiper Rolls Industrial Dry Tech	Code	407547

BEDROOM



Facial Tissue Dissolve Tech	Code	411173
-----------------------------	-------------	---------------

SPA



Hand Towel Rolls Autocut Dry Tech	Code	416623
Hand Towel Rolls Autocut Dry Tech	Code	407558
Wiper Rolls Industrial Dry Tech	Code	416612
Wiper Rolls Industrial Dry Tech	Code	418531
Medical Rolls Defend Tech	Code	419719

RESTAURANT



Napkins 33x33 cm Ready Table White	Code	400710
Napkins 38x38 cm Ready Table White	Code	404270
Napkins 38x38 cm Ready Table White	Code	415227
Napkins 38x38 cm Ready Table Orange	Code	415215
Napkins 38x38 cm Ready Table Bordeaux	Code	415216
Napkins 38x38 cm Ready Table Yellow	Code	415217
Napkins 38x38 cm Ready Table Red	Code	415218
Napkins 38x38 cm Ready Table Champagne	Code	415219
Napkins 38x38 cm Ready Table Green	Code	415220
Napkins 38x38 cm Ready Table Blue	Code	415221
Napkins 38x38 cm Ready Table Lime	Code	415222
Napkins 38x38 cm Ready Table Brown	Code	415223
Napkins 38x38 cm Ready Table Black	Code	415224
Bar Napkins Ready Table	Code	415242
Quarter-Fold Napkins Interfolded Ready Table	Code	416181
Quarter-Fold Napkins Interfolded Ready Table	Code	416182
Quarter-Fold Napkins Interfolded Ready Table	Code	416187
Quarter-Fold Napkins Interfolded Ready Table	Code	416188
Quarter-Fold Napkins Interfolded Ready Table	Code	416191
Quarter-Fold Napkins Interfolded Ready Table	Code	416192
Half-Fold Napkins Interfolded Ready Table	Code	416183
Half-Fold Napkins Interfolded Ready Table	Code	416184
Half-Fold Napkins Interfolded Ready Table	Code	416189
Half-Fold Napkins Interfolded Ready Table	Code	416190
Half-Fold Napkins Interfolded Ready Table	Code	416193
Half-Fold Napkins Interfolded Ready Table	Code	416194
Interfolded Napkins Dispenser Superior Ready Table Lime	Code	417198
Interfolded Napkins Dispenser Superior Ready Table Red	Code	417199
Interfolded Napkins Dispenser Superior Ready Table Orange	Code	417200
Interfolded Napkins Dispenser Superior Ready Table Black	Code	417201
Interfolded Napkins Dispenser Basic Ready Table Red	Code	417808
Interfolded Napkins Dispenser Basic Ready Table Orange	Code	417809
Interfolded Napkins Dispenser Basic Ready Table Lime	Code	417810
Interfolded Napkins Dispenser Basic Ready Table Black	Code	417811

TAILORED SOLUTION

HYGIENE BEST PRACTICES

